

Installation Instructions - Laminate Flooring with Drop Loc

Laminate with Drop Loc
August 2008

I. Before You Start

Keep the boards in room temperature for at least 48 hours in unopened package before you start the installation. The room temperature must be at least 18 °C before and installing installation. For floors surfaces exceeding 100sqmt (1076sqft.) and/or at lengths exceeding 10m (33ft.) and overlaps to new rooms and floor surface which do not join symmetrically, use expansion joints to divide the floor sections.

- Inspect your subfloor before you begin. It must be clean, dry and level to within 5mm (3/16") within a 3 meters (10 foot) span.
- It is recommended to repair any loose boards or squeaks before you begin installation.
- With a floating floor you must always ensure you leave a 1cm (3/8") gap between walls and fixtures such as pipes, pillars, stairs, etc.
Tip: When installing around pipes, drill the holes 20 mm (3/4") larger than the diameter of the pipes.
- Choose an underlay material.
- Relative Humidity Levels of your room should be maintained at 35-60 % at 18-24 °C (65 degrees to 75 degrees Fahrenheit).
- Decide the installation direction. It is recommended to install the length direction of the planks parallel to the main light direction.
- Measure the area to be installed. The board width of last row shall not be less than 2" (50mm), If so, adjust the width of the first row to be installed. When measuring take the free gap requirement of about 3/8" (10mm) of the floor perimeter into account. In narrow hallways, install the floor parallel to the lengthways.
- Inspect your laminate flooring. No claims relating to surface defects will be accepted after installation.

Subfloors with radiant heat

IMPORTANT: Due to the speed of sudden temperature changes, which has potential to negatively affect laminate flooring construction, it is not recommended to install with electrical radiant heating system. This will not be covered by the manufacturer's warranty. Below instructions is for radiant heating system using water.

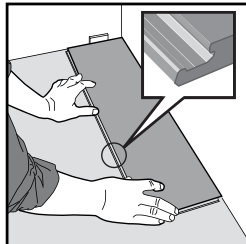
Ensure the radiant heat surface temperature never exceeds 27 degrees celsius(81 degrees Farenheit). Before installing over newly constructed radiant heat systems, operate the system at maximum capacity to force any residual moisture from the cementitious topping of the radiant heat system. Then set the thermostat to a comfortable room temperature for the installation. It is recommended that the radiant heat be applied in a gradual manner after installing the laminate flooring. Refer to the radiant heat system's manufacturer recommendations for additional guidance.

II. Floating installation

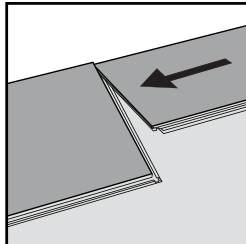
Begin by first installing a foam underlay. Run the foam underlay in the same direction as the flooring planks. The underlay should be butted side-by-side with no overlap. Tape seams together. If you are installing over a concrete subfloor, a 6-mil poly (plastic sheeting) is to be installed under the foam underlay. (Many foam underlays already have this plastic sheeting pre-attached).

Remember when installing your laminate floor to leave an open expansion gap of min 10mm (3/8") around the perimeter of the room (use wedges), i.e also at pipes, stairs, columns, doorframes and thresholds. The floor must be able to move free - do not connect or install tight to any construction part. Install to a maximum of 33ft (Approx. 10m) length /width at a time. If the room is larger, allow for an expansion gap which can be covered with the appropriate laminate T-mold. Also leave an expansion gap to separate areas in rooms that are off square (for example L-,F-, T-, U- shapes) Always leave expansion gaps in door openings.

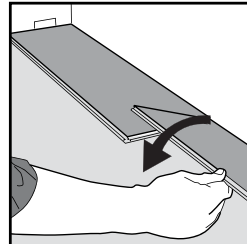
Installation method of floorpanels



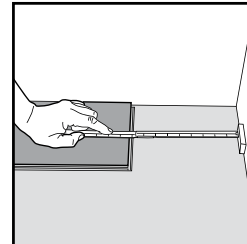
1. First plank, first row. Place a distance 6/16" (10mm) width to the left and position the plank against the wall. Later, after 3 rows, you can easily re-position the flooring against the front wall for the 3/8" (10mm) expansion gap.



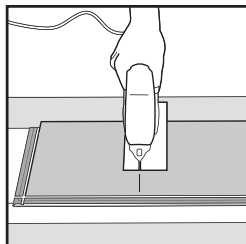
2. Second plank, first row. Place this plank tight to the short end of the first one.



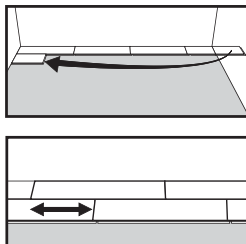
3. Fold down with a single action movement.



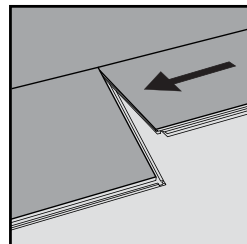
4. At the end of the first row, leave an expansion gap of 3/8" (10mm) to the wall and measure the length of the last plank to fit.



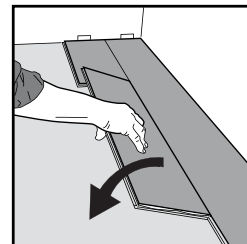
5. If cutting with a jig saw, the laminate surface should be turned down. If cutting with a hand saw, the laminate surface should be face up.



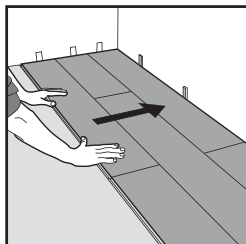
6. Second row. First plank minimum length of 1R 7 11/16" (500mm). Leave an expansion gap of 3/8" (10mm) against the wall. Generally, the minimum distance between short ends of planks in parallel rows shall not be less than 6 inches (150mm).



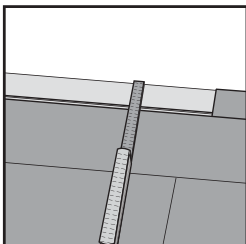
7. Install the second plank of the second row.



8. Place the panel tight to the short end of the previous panel and fold down in a single action movement.



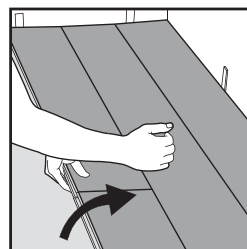
9. After 2-3 rows, re-position the floor to adjust the distance to the front wall to ensure an expansion gap of 3/8" (10mm).



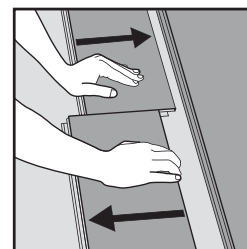
10. Last row (and perhaps also first row). Minimum width must be at least 2" (50mm). Remember to leave an expansion gap of 3/8" (10mm).

Tip! After cutting the final row panels lengthwise, glue the short ends.

Disassembling



Separate the whole row by carefully lifting up and releasing the whole row. Fold up and release the whole long side.



IV. CARE AND MAINTENANCE

Clean the floor regularly with a vacuum cleaner or dry mop. If necessary, the floor may be cleaned with a well wrung cloth and a synthetic detergent. Avoid using too much water. Spillages of water should be wiped off immediately. To protect the floor from sand we recommend you to use the doormats at entries (but do not use mats with a rubber backing). The ideal room humidity is 40-60% and temperature of 20 °C (68 degrees Fahrenheit).