

Installation Instructions - Laminate Flooring

I. Before You Start

Keep the boards in room temperature for at least 48 hours in unopened package before you start the installation. The room temperature must be at least 18 °C before and during installation. For floors surfaces exceeding 100 sqm and/ or at lengths exceeding 10 m and overlaps to new rooms surfaces which do not join symmetrically, use expansion joints to divide the floor sections.

- Inspect your subfloor before you begin. It must be clean, dry and level to within 5 mm within a 3 meters span.
 - It is recommended to repair any loose boards or squeaks before you begin installation.
 - You must always ensure you leave a 10 mm gap between walls and fixtures such as pipes, pillars, stairs, etc.
- Tip: When installing around pipes, drill the holes 20 mm larger than the diameter of the pipes.
- Choose a suitable laminate floor underlay.
 - Relative Humidity Levels of your room should be maintained at 35-60 % at 18-24 °C.
 - Decide the installation direction. It is recommended to install the length direction of the planks parallel to the main light direction.
 - Measure the area to be installed. The board width of last row shall not be less than 50 mm. If so, adjust the width of the first row to be installed. When measuring take the free gap requirement of 10 mm of the floor perimeter into account. In narrow hallways, install the floor parallel to the lengthways.
 - Inspect your laminate flooring. No claims relating to any noticeable defects will be accepted.

Subfloors radiant underfloor heating

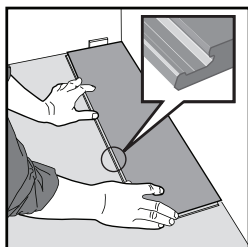
IMPORTANT: Due to the speed of sudden temperature changes, which has potential to negatively affect laminate flooring construction, it is not recommended to install with electrical radiant underfloor heating systems. This will not be covered by the manufacturer's warranty. Below instructions are for radiant underfloor heating using water. Ensure the radiant underfloor heating surface temperature never exceeds 27 degrees celsius. Before installing over newly constructed radiant underfloor heating systems, operate the system at maximum capacity to force any residual moisture from the cementitious topping of the radiant underfloor heating system. Then set the thermostat to a comfortable room temperature for the installation. It is recommended that the radiant underfloor heating be applied in a gradual manner after installing the laminate flooring. Refer to the radiant underfloor heating system's manufacturer recommendations for additional guidance.

II. Installation

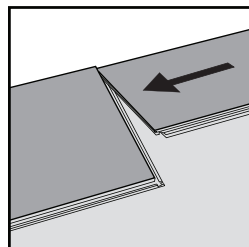
Begin by first installing an underlay. Start by installing the underlay in the same direction as the flooring planks. The underlay should be butted side-by-side with no overlap. Tape seams together. If you are installing over a concrete subfloor, a 0.6mm poly (plastic sheeting) is to be installed under the underlay. (Many underlays already have this plastic sheeting pre-attached).

Remember when installing your laminate floor to leave an open expansion gap of min 10 mm around the entire perimeter of the floor including doorways i.e also at pipes, stairs, columns, doorframes and thresholds. The floor must be able to move free - do not connect or install tight to any construction part. Install to a maximum of Approx. 10 m length/ width at a time. If the room is larger, allow for an expansion gap which can be covered with the appropriate laminate T-mold. Also leave an expansion gap to separate areas in rooms that are off square (for example L-, F-, T-, U- shapes).

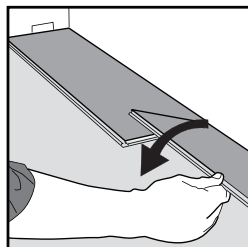
Installation method of floorpanels



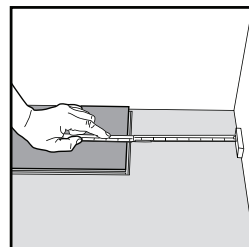
1. First plank, first row. Place a distance 10 mm width to the left and position the plank against the wall. Later, after 3 rows, you can easily re-position the flooring against the front wall for the 10 mm expansion gap.



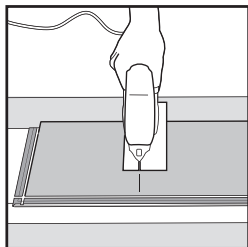
2. Second plank, first row. Place this plank tight to the short end of the first one.



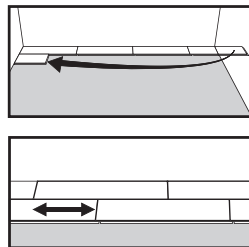
3. Fold down with a single action movement.



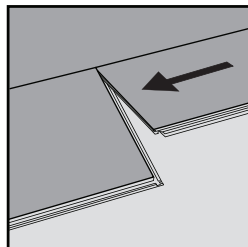
4. At the end of the first row, leave an expansion gap of 10 mm to the wall and measure the length of the last plank to fit.



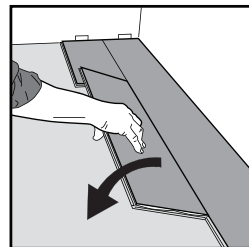
5. If cutting with a jig saw, the laminate surface should be turned down. If cutting with a hand saw, the laminate surface should be face up.



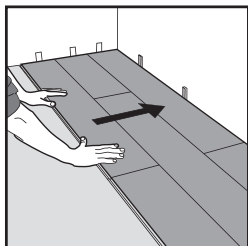
6. Second row, first plank minimum length of 500 mm. Leave an expansion gap of 10 mm against the wall. The minimum distance between short ends of planks in parallel rows shall not be less than 150 mm.



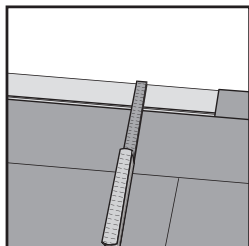
7. Install the second plank of the second row.



8. Place the panel tight to the short end of the previous panel and fold down in a single action movement.

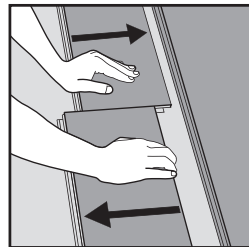
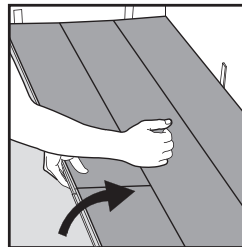


9. After 2-3 rows, re-position the floor to adjust the distance to the front wall to ensure an expansion gap of 10 mm.



10. Last row (and perhaps also first row). Minimum width must be at least 50 mm. Remember to leave an expansion gap of 10 mm.

Disassembling



Separate the whole row by carefully lifting up and releasing the whole row. Fold up and release the whole long side.

Tip! If cutting the boards lengthways on the final row glue the header joints on the narrow part of the board using wood glue.
Remark: If the planks do not click perfectly, we recommend to push the plastic in.

IV. Care and maintenance

Clean the floor regularly with a vacuum cleaner or dry mop. If necessary, the floor may be cleaned with a well wrung cloth and a synthetic detergent. Avoid using too much water. Spillages of water should be wiped off immediately. To protect the floor from Grit we recommend you to use the doormats at entries (but do not use mats with a rubber backing). The ideal room humidity is 40-60% and temperature of 20 °C.